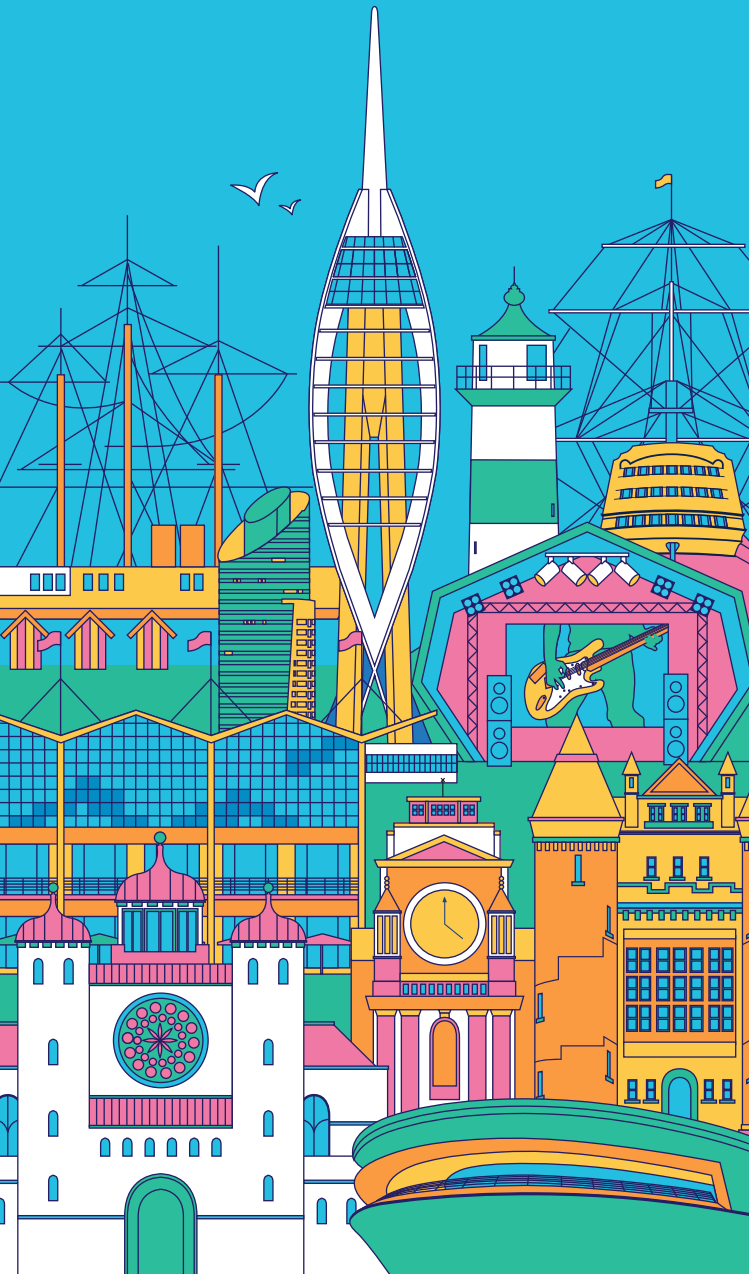




Official Visitor Guide 2019

PORTSMOUTH

visitportsmouth.co.uk





Portsmouth Historic Dockyard

VICE-ADMIRAL LORD

NELSON

In pursuit of victory – discover his story

HMS VICTORY
THE WORLD'S
MOST FAMOUS
WARSHIP

Book tickets at
historicdockyard.co.uk

THE
NATIONAL
MUSEUM



Welcome to Portsmouth

the great waterfront city

Portsmouth
the great waterfront city

EMIRATES SPINNAKER TOWER AND AERIAL VIEW OF PORTSMOUTH HISTORIC DOCKYARD

With world-class attractions, spectacular events, a great cultural offer and fabulous places to stay, Portsmouth is the top destination choice on the south coast.

Enjoy the breath-taking panoramic views of Portsmouth and beyond from the top of the iconic Emirates Spinnaker Tower then visit Gunwharf Quays to shop at over 90 premium designer outlets and eat at one of 30 cosmopolitan bars and restaurants.

Explore Portsmouth Historic Dockyard including the historic ships Mary Rose, HMS Victory, HMS Warrior and M.33 along with the National Museum of the Royal Navy.

Don't miss The D-Day Story museum and nearby Henry VIII's Southsea Castle. Find out more about the city's Sherlock Holmes connections at Portsmouth Museum and visit the house where the great author Charles Dickens was born.

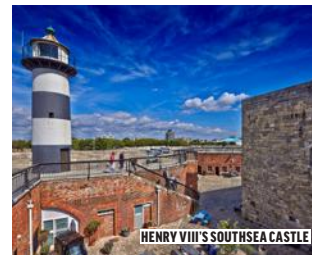
Southsea has something for everyone; from unique independent shops, boutiques and restaurants, to wide open spaces, lush green parks and seafront attractions.

With its narrow cobbled streets and historic fortifications, bustling Camber Dock, Hotwalls Studios, traditional pubs, restaurants, and local fish market, Old Portsmouth is the perfect place for a stroll.

D-DAY 75

2019 is the 75th anniversary of the D-Day Landings in World War Two and Portsmouth takes centre stage as the national focus of the commemorative events. The full programme – running from 5–9 June 2019 – is likely to include a Drumhead Service, amphibious assault landing, air displays, vintage fair, military vehicles, arena displays, military bands and much more.

In late 2019 the Landing Craft Tank LCT 7074 will arrive on Southsea Seafront alongside The D-Day Story, the sole surviving Landing Craft (Tank) from D-Day, LCT7074 will open to the public in 2020.





ACTOR PORTRAYING CAPTAIN HARDY ABOARD HMS VICTORY



GUNWHARF QUAYS



THE D-DAY STORY



THE MARY ROSE



EMIRATES SPINNAKER TOWER

Five of the best

PORTSMOUTH HISTORIC DOCKYARD

You can be guaranteed an “aaaaarrhhmazing” day out with Portsmouth Historic Dockyard’s year of pirates. From a UK first exhibition, plenty of family activities to the absorbing history about pirates, and the essential work of the Royal Navy in patrolling the high seas to combat modern-day pirates. The Full Navy Ticket includes entry to 11 amazing attractions including HMS Victory and HMS Warrior.

www.historicdockyard.co.uk

THE MARY ROSE

Portsmouth’s number one attraction on TripAdvisor, The Mary Rose offers stunning views of Henry VIII’s favourite warship, which sank in 1545 and was raised spectacularly in 1982. This must-see museum tells an emotionally captivating story, bringing the personal stories of the crew to life in an award-winning, world-class immersive experience. You will never feel closer to the sights, sounds and smells of Tudor England!

www.maryrose.org

EMIRATES SPINNAKER TOWER

Emirates Spinnaker Tower stands at 170 metres tall, offering breathtaking 23 mile views over Portsmouth Harbour, the Solent and Isle of Wight. The iconic structure is a popular destination boasting a high speed lift, thrilling glass floor, virtual reality experience, informative touch screen displays, two cafés and open air ‘Sky Garden’.

www.spinnakertower.co.uk

GUNWHARF QUAYS

Gunwharf Quays’ relaxed approach to shopping makes it the perfect day out destination. With over 30 restaurants, bars and cafés, you can choose to have a lazy lunch in Loch Fyne, enjoy French cuisine in Brasserie Blanc, share a family platter in Nando’s, or simply savour a glass of Prosecco in one of the many waterfront bars.

www.gunwharf-quays.com

THE D-DAY STORY

This new museum tells the story of D-Day – from the months of preparation, to the landings and the Battle of Normandy. The story is told through the perspectives of the people involved, using authentic objects, interactives and video.

The impressive 83-metre Overlord Embroidery offers a fantastic finale to the visit, including the new ‘Legacy’ and ‘Making of the Embroidery’ galleries.

www.thedaystory.com

Back in time

Portsmouth has a fascinating history to discover during your visit, below are a few of the historical highlights.

PORTSMOUTH MUSEUM

With free admission, Portsmouth Museum is a great place to begin your discovery into Portsmouth's diverse history. Find out how life in the city has changed from the 17th century to the present day.

OLD PORTSMOUTH

Stroll through Old Portsmouth in the footsteps of Vice Admiral Lord Nelson and view the statue erected in his honour. Explore the historic fortifications at the entrance to Portsmouth Harbour including the Round Tower, Square Tower and the creative quarter Hotwalls Studios, where the city's historic fortifications have been transformed into thirteen working studios and a waterfront dining space.

In Old Portsmouth make sure you visit both Portsmouth's Anglican Cathedral (St Thomas's) and the Garrison Church which has stood in Portsmouth for nearly 800 years – both have fascinating histories to discover. Portsmouth is a city with not one, but two cathedrals. St John's Catholic Cathedral, in the city centre, dates from 1882.

INDUSTRIAL HERITAGE AT EASTNEY

Eastney Beam Engine House and Gas Engine House include a pair of classic Boulton Watt beam engines and pumps restored to their original 1887 condition. Look out for details of open days.

THE FORTS

Discover the national collection of artillery at Fort Nelson. Explore 19 acres of ramparts, outer fortifications, secret underground tunnels, and ammunition bunkers.

Portchester Castle provides the perfect setting for a relaxed, fun, historic day out – the most impressive and best-preserved of the Roman 'Saxon Shore' forts.



DISCOVER...

SUBMARINES, WEAPONS USED BY THE ROYAL NAVY, DIVING EQUIPMENT AND HOVERCRAFT USED BY JAMES BOND PLUS 17TH CENTURY VILLAGE

WWW.DISCOVERGOSPORT.CO.UK

ROYAL ARMOURIES

Fort Nelson / Fareham

Home of the Big Guns

Free admission | Cafe | Special events

National collection

www.royalarmouries.org



Beside the sea

The seafront at Southsea is not to be missed, with the beach stretching 4 miles from Old Portsmouth to Eastney.

HENRY VIII'S SOUTHSEA CASTLE

Southsea Castle was part of a series of fortifications built in 1544 by King Henry VIII. The castle keep explains the fortification's history while the ramparts offer amazing views across the Solent and the city. Enjoy a bite to eat at the castle's Courtyard Café, treat yourself at the Waterfront Gifts shop or visit the on-site microbrewery. This free seafront attraction is open from March – October.

www.southseacastle.co.uk

BLUE REEF AQUARIUM

Explore the aquatic world at Blue Reef – from sharks to clownfish, jellyfish to otters, there's plenty to discover – including the spectacular underwater tunnel. With more than 40 different displays, the biggest decision you make will be who to see first! In warm weather enjoy the outdoor Blue Reef Beach Club.

www.blureefaquarium.co.uk

CANOE LAKE

This fun, family spot is popular for crabbing, pedalos and picnics. With a model village, rose garden, tennis courts, choice of cafes and play park complete with water splash, it's a must on sunny days.

PORTSMOUTH NATURAL HISTORY MUSEUM

Visit Portsmouth Natural History Museum and find out about the local wildlife including a seasonal butterfly house, an observational beehive and the A-Z of Natural History display.

Open free of charge all year – butterflies on wing between April and September.

www.portsmouthnaturalhistory.co.uk

THE PIERS

South Parade Pier offers spectacular sea views, plus a restaurant, shops, pop-up eateries and an arcade. Clarence Pier, one of the largest amusement parks on the south coast, boasts a wide range of rides and activities for the whole family.



EXPLORE OUR UNDERWATER WORLD AT BLUE REEF PORTSMOUTH



From Sharks and Stingrays to magical Moray Eels, Blue Reef brings the magic of the undersea world alive.

Journey through the underwater tunnel below the giant Sea of Cortez with its hundreds of colourful fish. More than 40 living displays and the amazing Otter Holt provide an unforgettable experience.

UP TO £12 OFF

*£2 off per person, up to 6 people. Cannot be used in conjunction with any other offer, discount, family or online ticket. Tickets must be bought on the door. Expiry date 31/12/19.

Buy discounted tickets online

www.blureefaquarium.co.uk/portsmouth

Clarence Esplanade, Southsea, Portsmouth, PO5 3PB

Email: portsmouth@blureefaquarium.co.uk Tel: 023 9287 5222



AERIAL VIEW OF SOUTHSEA SEAFRONT

A walking tour of the coast

Enjoy the great outdoors with a walk along Portsea Island's entire perimeter, where there's plenty to see...

SOUTHSEA SEAFRONT

An ideal starting point is the Southsea seafront promenade; a three-mile route running from Old Portsmouth to Eastney. It's an incredibly popular spot year-round, offering almost uninterrupted sea views on a wide and pedestrianised pathway.

You'll find a number of visitor attractions, including Clarence Pier, Blue Reef Aquarium, Southsea Castle, The D-Day Story and South Parade Pier, as well as a handful of restaurants and coffee houses.

EASTNEY, MILTON AND LANGSTONE HARBOUR

Round the corner from Portsmouth's southern edge to get off the beaten tourist track, where equally stunning coastal views can be enjoyed in peaceful surrounds.

At the shallows of Milton Locks Nature Reserve, along the Lock Lake shore, you can see an array of wildlife, including oystercatchers, curlews and common lizards.

Next, head north to reach Milton Common, a semi-natural expanse of grassland and gorse that makes it easy to forget you're still in a city. Get lost in the various tracks and paths, or stick to the elevated coastal walkways.

HILSEA LINES

A local favourite, Hilsea Lines offers two walkways that are very close in proximity but couldn't be more different. The northernmost route is open and elevated, offering views across the waterways. The southern pathway, meanwhile, is almost entirely under the tree canopy – its shaded tracks proving popular with walkers and cyclists alike.

After passing the South Coast Wakepark you join the paved route alongside Hilsea Bastion Gardens towards Alexandra Park.

THE INDUSTRIAL WEST

Portsmouth's west coast provides a fascinating insight into the city's naval and transport pedigree. Here you'll find Portsmouth International Port, which carries millions of passengers each year and services more destinations than any other UK port.

Walk on and you're certain to see the extensive Dockyard wall, which separates the city at large from the naval docks. Keep alongside this and you'll reach the entrance to Portsmouth Historic Dockyard and The Mary Rose.

THE MILLENNIUM PROMENADE

From the Dockyard you can find your way back to Southsea seafront via the Millennium Promenade. This two-mile route passes Gunwharf Quays and Old Portsmouth, before finishing along Southsea seafront. It's simple to follow as the whole route is marked by a chain motif set into the pavement. There are also numerous information boards along the way, detailing points of interest or historical importance.

It should take an hour to walk the Millennium Promenade, though it's worth leaving extra time to enjoy the shops, pubs, restaurants and attractions along its length.

#FREEWIFI



EMIRATES ECONOMY

The fun starts with free onboard Wi-Fi. With delicious meals, award-winning entertainment on the widest screens in the sky, expect lots of posts, shares, likes and tweets.

This isn't just flying...this is the Emirates A380



**BOOK
ONLINE
TODAY!**

SPECTACULAR VIEWS, UNFORGETTABLE EXPERIENCES

SPINNAKERTOWER.CO.UK



continuum
attractions

Culture by the coast



DICKENS' BIRTHPLACE MUSEUM



From live music to high drama, great events, literary and artistic highlights, and comedy to make you laugh until it hurts, Portsmouth's cultural programme offers something for everyone.

For literature lovers the **Portsmouth BookFest**, 18 February–10 March, offers a wide range of events. Portsmouth is the city where the great author Charles Dickens was born and the world famous detective Sherlock Holmes was created. Visit the Dickens' Birthplace Museum and Portsmouth Museum to find out more about these iconic figures from British literature.

Laughter is the focus at Portsmouth Guildhall in March, as the **Big Mouth Comedy Festival**, starring Milton Jones, Neil Morrissey, John Thomson and many more, takes place (1, 2, 7 & 8 March). Regular comedy evenings and acts also run throughout the year at the city's venues.

Portsmouth Comic Con – International Festival of Comics returns to Portsmouth Guildhall in May bringing the best of comic, film, TV and pop culture entertainment to the largest event of its kind in the South!

In June the city's annual 10 day cultural festival, **Portsmouth Festivities**, takes place. Showcasing the culture and heritage of Portsmouth, the festival includes music, theatre, dance, art, literature, talks, film, outdoor events and family activities.

Victorious Festival from 23–25 August is a family friendly festival for music lovers, a stone's throw from the sea. The festival continues to be an unmissable event, with a line-up that is guaranteed to pack a punch with a mix of heavy weight headliners, family favourites and new talent.

The huge 30,000 square metre kids' area is a mini-festival in its own right, filled with entirely free activities and entertainment. Ticket prices start from £25! For tickets please visit www.victoriousfestival.co.uk

Portsmouth offers great Christmas entertainment. Visit the **Victorian Festival of Christmas** at Portsmouth Historic Dockyard or enjoy ice skating in front of the impressive Portsmouth Guildhall. For some traditional entertainment treat yourself to a pantomime or Christmas show at the city's venues.

THE SHOW MUST GO ON!

Portsmouth is home to two wonderful Matcham theatres, the Kings Theatre and the New Theatre Royal, both offering a diverse range of dramatic live entertainment.

As well as its programme of world-class shows, events and entertainment, Portsmouth Guildhall offers tours, exhibitions, workshops and casual dining at The Square Kitchen. Other venues in the city include Groundlings Theatre, The Wedgewood Rooms and The Pyramids, offering great music, drama, comedy and more throughout the year. For full details of Portsmouth's packed events programme, including free live music throughout the summer at the Bandstand on Southsea Seaford, go to www.visitportsmouth.co.uk

ART FOR ART'S SAKE

Aspex Gallery in Gunwharf Quays presents an outstanding exhibition programme featuring works by contemporary artists from around the world and is a great place to see Portsmouth's freshest artistic talent.

Portsmouth Museum is home to fine and decorative art galleries with changing displays. Spend time visiting the rest of this free museum and enjoy tea and cake in the beautiful gardens. Don't miss the Hotwalls Studios creative quarter in Old Portsmouth and the smaller galleries in the city – see list on page 40.

“It’s one of those places
you will never forget.
Magical.”

TripAdvisor



500 years.

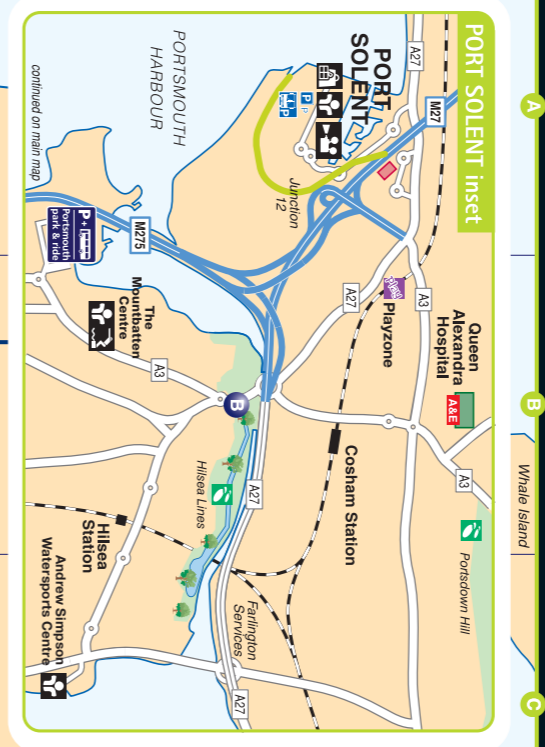
A heartbeat away.

Book now and save at
MaryRose.org



WHAT'S ON IN PORTSMOUTH 2019

8-page pull out featuring 2019 events listings and map



Here's a flavour of our events in 2019. Some event details may change, so check www.visitportsmouth.co.uk for full listings and updates.

JANUARY

- Avenue Q**
Kings Theatre
- Exhibition - Amanda Loomes**
Aspex Gallery (until March)
- Holocaust Memorial Day**
- Icebreaker Festival**
Various Southsea venues

FEBRUARY

- Charles Dickens' Birthday**
Dickens Birthplace
- Chinese New Year**
Gunwharf Quays
- The men of the Mary Rose: who do we think they were?** New temporary exhibition
The Mary Rose
- Portsmouth Coastal Half-Marathon**
Southsea Seafrost
- The House on Cold Hill**
Kings Theatre
- Guildhall Games Fest**
Portsmouth Guildhall
- BBC Big Band - A celebration of Frank Sinatra and Ella Fitzgerald**
Portsmouth Guildhall
- Portsmouth BookFest**
Venues across the city
- The Dead South**
Pyramids
- Dr Michael Mosley**
New Theatre Royal

MARCH

- Big Mouth Comedy Festival**
Portsmouth Guildhall
- Jason Manford: Muddle Class**
Portsmouth Guildhall
- In the Willows - New Hip Hop Musical**
New Theatre Royal
- Science Week**
The Mary Rose

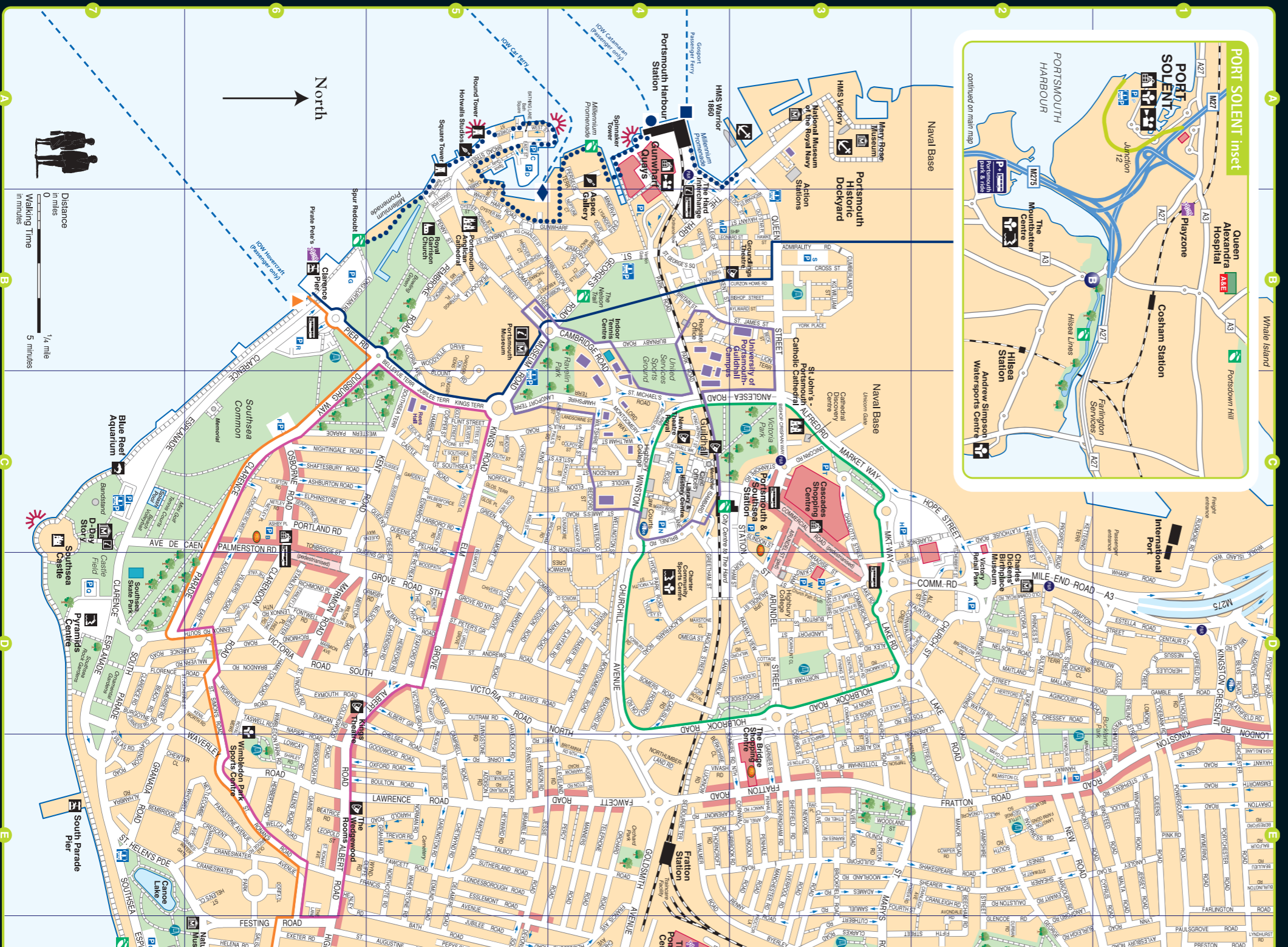
- Tom Gates**
Kings Theatre
- Stiff Little Fingers**
Pyramids
- Ballet Boys**
New Theatre Royal
- Coming Home, Isambard Brunel**
Portsmouth Museum (until May)
- Tattoo Festival**
Pyramids

APRIL

- Richard Ashcroft**
Portsmouth Guildhall
- The Jungle Book**
New Theatre Royal
- Blood Brothers**
Kings Theatre
- Tudor Time Detectives**
The Mary Rose
- Paul Merton - Improv Chums**
New Theatre Royal
- Exhibition - Maggie Roberts**
Aspex Gallery (until June)
- Make Up on the Ration - Masterclass**
The D-Day Story
- Bing, Meet and Greet**
Emirates Spinnaker Tower
- Super Spies - family fun day**
The D-Day Story

MAY

- Portsmouth Comic Con - International Festival of Comics**
Portsmouth Guildhall
- The Lord Mayor's Rural and Seaside Show**
Southsea Seafrost
- Strictly Come Dancing - The Professionals UK Tour**
Portsmouth Guildhall
- Meet the Tudor Masterchef**
The Mary Rose
- Horrible Histories**
New Theatre Royal
- Leo Sayer**
New Theatre Royal
- Les Musicals, Jonathan Ansell & Rhydian Roberts**
New Theatre Royal



PORTSMOUTH
GUILDHALL

THE HEART OF THE CITY
World Class
Concerts & Events

Exhibitions, Tours & Workshops

Square Kitchen
Casual Dining

FEEL THE BEAT

WWW.PORTSMOUTHGUILDHALL.ORG.UK



- JUNE**
- D-Day 75 Commemorative events**
Southsea Common and Seafrost
 - Exhibition of D-Day Veteran Portraits from the Royal Collection**
Portsmouth Museum (until Sept)
 - Armed Forces Day**
Southsea Common
 - Seafood Festival**
Gunwharf Quays
 - Portsmouth Festivities**
Venues across the city
 - Moonlit Memories**
Southsea Seafrost
 - Hair**
Kings Theatre
- JULY**
- Pretty Muddy**
Southsea Common
 - Race For Life**
Southsea Seafrost
 - Southsea Food Festival**
Palmerston Road
 - D-Day 75 Conference**
University of Portsmouth and The D-Day Story
 - Meet the Tudor Shipwright**
The Mary Rose
 - Summer Show**
Aspex Gallery (until Sept)
- AUGUST**
- Beach Dubbin**
Southsea Common
 - International Kite Festival**
Southsea Common
 - Victorious Festival**
Southsea Common and Seafrost
 - Summer of Sherlock**
Portsmouth Libraries
 - D-Day Science Explorers Week**
The D-Day Story

- SEPTEMBER**
- Charmed Life Festival**
Victoria Park
 - Memory Walk**
Southsea Seafrost
 - Brydon, Mack & Mitchell**
Portsmouth Guildhall
 - Portsmouth Revisited Exhibition**
Portsmouth Museum (until Feb 20)
- OCTOBER**
- Oktoberfest**
Castle Field
 - Great South Run**
Southsea Seafrost
 - Meet the Tudor Men of War**
The Mary Rose
- NOVEMBER**
- Victorian Festival of Christmas**
Portsmouth Historic Dockyard
 - Fireworks and Black Friday**
Gunwharf Quays
 - Ice Skate Portsmouth**
Guildhall Square (also December)
 - Remembrance Sunday Service and Parade**
Guildhall Square
 - Tim Minchin**
Portsmouth Guildhall
 - Ardal O'Hanlon, The Showing Off Must Go On**
New Theatre Royal
 - Jimmy Carr**
Portsmouth Guildhall
- DECEMBER**
- Portsmouth Coastal Marathon**
Southsea Seafrost
 - The Nutcracker**
New Theatre Royal
 - Christmas Experience**
Gunwharf Quays
 - King Henry's Christmas Court**
The Mary Rose

For even more events and updates head to www.visitportsmouth.co.uk



Key to Buildings

- Hospital
- Shopping
- Sport and Leisure
- University
- Other building
- Parks and open spaces

Key to Quarters

- Central Southsea
- City Centre
- Historic Waterfront
- Port Solent
- Seafrost
- University

Key to Attractions

- Aquarium
- Art Gallery
- Caravan Site
- Castle
- Cathedral
- Church
- Cinema
- Football ground
- Historic Dockyard
- Industrial heritage
- Museum
- Pier
- Shopping
- Sports Centre
- Swimming Pool
- Theatre
- Tower or Folly
- Walking Route
- Information Centre

Key to other symbols

- Buses
- Car Park
- Coach Park
- Indoor Play Area
- Millennium Promenades
- Play Area
- Police Station
- Post Office
- Viewpoint
- Park & Ride stop

For Ferries follow symbols

- Isle of Wight
- Car
- Passenger
- Hovercraft
- Gosport
- Passenger

Controlled Off-street parking

Name	no. of spaces
A. All Saints (D2)	896
B. Ashby Place (C6)	148
C. Broad Street (A5)	373
D. BAR (restricted)	295
F. Southsea Common (C6)	
G. Clarence Pier (B6)	
H. Clarence Street (C2)	
I. Seafrost, D-Day (C7)	
J. Guildhall Walk (C4)	
L. Gunwharf Quays (B4)	
M. The Harbour (B4)	
N. City Centre South, Isambard Brunel (C4)	
O. Seafrost, Canceo Lake (F7)	
P. Port Solent (inset A1)	26
Q. Pyramids (D7)	11
R. Seafrost, Esplanade (B6)	8
S. Historic Ships (B3)	
T. Cascades, Charfotte Street (C3)	
U. Station Street (C3)	
V. Crasswell Street (D3) multi-storey	
W. Crasswell Street (D3) surface	
X. Coach Drop-off point	
Y. D-Day Museum (C7)	
Z. Port Solent (inset)	
AA. St. George's Road (B4)	

Parking Information
The car parks listed below are identified on the map by letters and symbols

Based on aerial photography and field survey. While every effort has been made to ensure this map is accurate and up to date, neither the publishers or the copyright holders accept any liability for loss or inconvenience incurred as a result of any errors. The representation of any footpath, road or track on this map does not necessarily indicate any right of way.

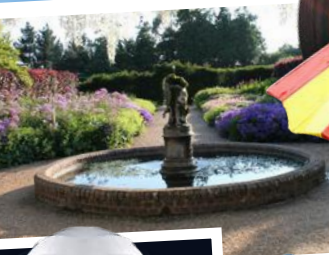
Copyright © 2017 Portsmouth City Council. All rights reserved.
This work is registered with the UK Copyright Service. Registration No: 331726

Beaulieu

Truly scrumptious collection
of memorabilia to celebrate
the 50th anniversary of

**Chitty Chitty
Bang Bang**

On display until
3 November 2019



**National
Motor Museum**

**Palace House
& Gardens**

World of Top Gear

Beaulieu Abbey

beaulieu.co.uk



Beaulieu | New Forest | Hampshire | SO42 7ZN

01590 612345 Open 10am daily Free Parking



Born to shop

Portsmouth offers a full range of waterfront shopping.

GUNWHARF QUAYS, WATERFRONT OUTLET SHOPPING

Set on Portsmouth's historic waterfront, Gunwharf Quays is the UK's only waterfront shopping outlet where you'll find over 90 famous brands with savings of up to 60% off the original price. As well as men's and women's fashion, there's childrenswear, shoes and accessories, sportswear, homewares, lifestyle, gifting and beauty, a shopper's paradise.

SOUTHSEA SHOPPING

Palmerston Road is home to John Lewis and Debenhams, plus other high-street favourites and regular street markets, whilst Marmion Road presents chocolatiers, designer jewellery, boutiques and furniture.

Albert Road and Castle Road are considered two of the city's hidden gems, packed with independent shops selling fashion, furniture, antiques and collectables.

HIT THE HIGH STREET

Head to our city centre where there are over 200 stores and the indoor shopping mall Cascades, which is home to some of the biggest brand names in the UK. A traditional street market takes place from Thursday to Saturday, selling fresh produce, flowers and clothing.

SET SAIL FOR PORT SOLENT

With a selection of boutique and branded stores, Port Solent marina offers a truly unique shopping experience. Treat yourself to something special or find the perfect gift for any occasion.



ALBERT ROAD



CASCADES SHOPPING CENTRE



GIVE YOURSELF A DIFFERENT DAY

Shop, eat and relax on Portsmouth's historic waterfront, with great savings on over 90 brands.

GUNWHARF QUAYS

WATERFRONT OUTLET SHOPPING

Food glorious food



SOUTHSEA BEACH CAFE

Portsmouth is the perfect place to tickle your taste buds! Choose from fine dining, fabulous sea views, quirky cafes and independent restaurants offering global menu options.

SEA VIEWS, TOP RESTAURANTS AND WORLD CUISINE

Many restaurants at Gunwharf Quays and Port Solent boast glorious terraces overlooking the harbour and marina respectively.

When it comes to dining out, Gunwharf Quays has something to suit every taste, with over 30 restaurants, enjoy a laid back lunch, family meal or just catch up with friends.

Southsea offers everything from fine dining to global food and traditional fish and chips. In July the Southsea Food Festival includes food markets, tastings, demonstrations and live music.

CAFÉ CULTURE

Portsmouth is packed with cafes and coffee houses, from the traditional to the unusual and unique. Treat yourself to a pie and an album at Pie and Vinyl in Castle Road or while away an afternoon playing a board game at Dice Café in Albert Road. Choose from a wide range of further coffee houses and tea rooms.

OLD PORTSMOUTH

In Old Portsmouth traditional pubs and quaint tea rooms line the cobbled streets. Explore the Camber Dock and ramparts then enjoy a meal at a pub overlooking the harbour.

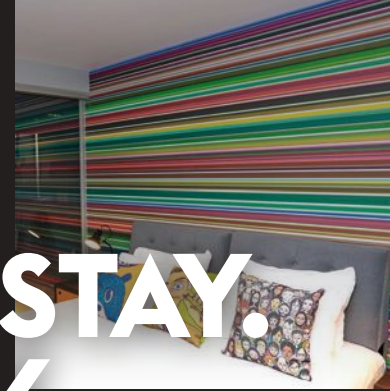
This is just a flavour of food in Portsmouth; see listing details on pages 40–42 or explore www.visitportsmouth.co.uk for more mouth-watering choices.

SOMETHING DIFFERENT

For something completely different, join one of the Emirates Spinnaker Tower's High Tea or Sky Dining events, visit one of the city's microbreweries or treat yourself to some Fort Gin at the new Portsmouth Distillery in the historic Fort Cumberland.

DINE OUT, STAY. WORK OUT, PLAY.

Village Hotel Portsmouth



Village Hotel Club is much more than a hotel. It's also a huge gym with pool, a Pub & Grill and our very own Starbucks. Our stylish rooms have big TVs and the latest gadgets. Upgrade to a Club room for the ultimate Village experience, plus free gym and pool access.

BOOK DIRECT

VILLAGE HOTEL
PORTSMOUTH
Lakeshore Drive,
Portsmouth PO6 3FR
02392 006245

Book online:
VillageHotels.com



VILLAGE HOTEL CLUB

Sport & recreation



Portsmouth is a city with a proud sporting heritage, world-class facilities and a calendar of international events.

GREAT SOUTH RUN

The Great South Run is recognised as the world's leading 10 mile running event. This fast, flat course is ideal for setting PBs, whilst also taking in some of the city's best scenery—from the beautiful seafront to Nelson's iconic HMS Victory. For one weekend, the roads of Southsea and Portsmouth are opened to athletes of all ages and abilities taking part in one of the scheduled races over two days.

The Great South Run returns to Portsmouth on Saturday 19 and Sunday 20 October 2019. Other running events in the city include Pretty Muddy and the Race For Life.

OUT ON THE WATER

As the UK's only island city, Portsmouth is a prime destination for water sports of all kinds.

The Andrew Simpson Watersports Centre offers courses and access to water-based activities including sailing, rowing, power boating, kayaking, canoeing and paddle-boarding. The centre also houses a 13-metre outdoor climbing tower. Or try out wakeboarding at the South Coast Wakepark, equipped with a Premier Cable wake system and offering a wide range of equipment and hire gear.

STATE-OF-THE-ART FACILITIES

Portsmouth's Mountbatten Centre is home to an Olympic-sized pool, teaching pool, 150-station state-of-the-art gym, health suite, 8-court sports hall, squash courts, athletics and cycle tracks as well as a great programme of activities and events. Next door is Portsmouth Tennis Centre with 4 indoor and 6 outdoor courts.



Pyramids is Portsmouth's largest leisure centre and includes a gym, fitness studio and spa, plus great water play for families and soft play for the under 5s. The water play area has fantastic flumes to ride, as well as a large pool for swimming and a smaller teaching pool for kids.

Canoe Lake Leisure boasts four top-specification artificial grass tennis courts, newly refurbished grass and hard courts and a brand new pavilion.

The Peter Ashley Activity Centres are located in the historic Fort Purbrook and Fort Widley. Activities include horse riding, archery, bushcraft, mountain biking, orienteering, rifle shooting and laser tag.

GREAT GOLF

Portsmouth boasts two 18-hole golf courses—Portsmouth Golf Centre and Portsmouth Golf Course. Both are available for pay and play, offering outstanding views and affordable sessions on great courses.

GET YOUR SKATES ON

Southsea Skatepark, on the seafront, is home to international-standard ramps. In winter enjoy skating on real ice in front of Portsmouth Guildhall.

OUTDOOR FAMILY FUN

When the weather's good you can't beat Southsea's seafront, with miles of pebble beaches to explore for paddling and swimming and gigantic green spaces where you can let off some steam and enjoy the sea air.

There are also tennis courts, crazy and mini golf courses, pitch 'n' putt and beach volleyball courts to keep you entertained. On warm days the beaches in Southsea, with excellent bathing water, are perfect for a swim or a paddle, alternatively take the children to the under-eight's splash pool opposite The D-Day Story on Southsea seafront, or the water splash at Canoe Lake, for some free fun.

Hilsea Lido offers outdoor swimming, diving and a splash pool. Dating back to the 1930s, the Lido is found in the beautiful setting of Hilsea Lines.

GLORIOUS
Interiors
TIMELESS
Elegance

ANCIENT CASTLE | FOR MORE DETAILS, CALL 01903 882173
f p STATELY HOME & GARDENS | OR VISIT WWW.ARUNDELCASTLE.ORG

ARUNDEL CASTLE

Explore the home of
Bombay Sapphire gin

BOMBAY SAPPHIRE
Distillery

THE BOMBAY SAPPHIRE DISTILLERY IS LESS THAN AN HOUR FROM PORTSMOUTH IN WHITCHURCH, HAMPSHIRE. ENJOY 10% OFF ONLINE BOOKINGS OF THE SELF-DISCOVERY EXPERIENCE SUNDAY – FRIDAY WITH THE CODE PORTS10 UNTIL 31ST MARCH 2020.

BOOK ONLINE IN ADVANCE AT
WWW.DISTILLERY.BOMBAYSAPPHIRE.COM

TANGMERE
military aviation
museum

See historic aircraft and displays. Try flight simulators and climb into cockpits.

Open daily from 10am
1 February – 30 November
Gift shop and tea room

Tangmere, Chichester PO20 2ES

01243 790090 www.tangmere-museum.org.uk

It's a great day out for all ages!

STANSTED HOUSE
ON THE HAMPSHIRE/SUSSEX BORDER

A PLACE TO MAKE
TIMELESS MEMORIES.

FREE ENTRY TO THE WALLED GARDENS • TEAROOMS
FARM SHOP • GARDEN CENTRE & PLAY AREA

2FOR1 ENTRY TO THE HOUSE WHEN QUOTING
'VISIT PORTSMOUTH'

STANSTED PARK, HAMPSHIRE, PO9 6DX
STANSTEDPARK.CO.UK

023 9241 2265

FREE

Guide book
with this advert!

Expires 31.10.19. Conditions apply. Entrance payable. Subject to availability. Voucher has no monetary value. marwell.org.uk
Reg. charity no. 275433.
SQ21 1JH. Ports Guide.

Marwell Zoo

TAXI

aquacars
Taking you there, Taking you home

02392
654321

DOWNLOAD OUR
FREE App

from the App Store

FOR BOOKINGS & CONTACTLESS PAYMENTS

– CAN BE USED IN ALL MAJOR UK CITIES –

ALL MAJOR CREDIT CARDS

Visit
Portsmouth
Escape to the Waterfront by Train

South Western
Railway

BOOK IN ADVANCE
FOR BIG SAVINGS

Travel information

Portsmouth is a key international gateway, ideally situated on England's south coast.

Portsmouth's Park and Ride is accessed direct from the M275 as you drive into the city and stops at the city centre shopping area and The Hard for Gunwharf Quays, Emirates Spinnaker Tower and the Historic Dockyard. www.parkandride.portsmouth.gov.uk


Travelling to Portsmouth by train is a great option, with regular direct services to and from London (from 92 mins), the south coast and the rest of the UK.

Regular ferry services sail to Caen, Cherbourg, Le Havre and St Malo in France, Santander and Bilbao in Spain and Jersey and Guernsey in the Channel Islands. The port also welcomes luxury cruise ships.

Portsmouth is easily accessible by air. Southampton International Airport is just 22 miles away and the major London airports Gatwick and Heathrow are both 60 miles away with easy rail access to the city.

Hovertravel operates a hovercraft from Southsea to Ryde, the world's only year-round commercial passenger hovercraft service. Wightlink operates both a car ferry service from Portsmouth to Fishbourne and a foot passenger catamaran service from Portsmouth Harbour to Ryde Pier.

The city is flat and compact, making walking and cycling convenient modes of transport. Park up your vehicle, or travel by train or coach, and explore the city on foot.

Average walking times from Portsmouth and Southsea Station		Average walking times from Portsmouth Harbour train station	
Portsmouth Guildhall	⌚ 4 mins	Gunwharf Quays	⌚ 4 mins
New Theatre Royal	⌚ 5 mins	Portsmouth Historic Dockyard	⌚ 6 mins
City Centre shopping	⌚ 6 mins	Emirates Spinnaker Tower	⌚ 8 mins
Kings Theatre	⌚ 23 mins	Portsmouth Museum	⌚ 14 mins
Palmerston Road shopping	⌚ 25 mins	Old Portsmouth	⌚ 15 mins
D-Day Story and Southsea Castle	⌚ 32 mins	Clarence Pier and Seafront Esplanade	⌚ 24 mins
Pyramids	⌚ 33 mins	D-Day Story and Southsea Castle	⌚ 36 mins

Useful sources of travel information to help you plan your journey:

Visitor Information Service: www.visitportsmouth.co.uk

✉ vis@portsmouthcc.gov.uk | ☎ 023 9282 6722

www.myjourneyportsmouth.com

National Express: www.nationalexpress.com | ☎ 08705 808080

MegaBus: www.megabus.com

National Rail Enquiries: ☎ 08457 484950



ROYAL NAVY SUBMARINE MUSEUM

Out & About

Portsmouth is the ideal base to explore England's beautiful south coast.

A short ferry ride across Portsmouth Harbour is Gosport. There you will find the Royal Navy Submarine Museum and Explosion Museum of Naval Firepower – both part of the Portsmouth Historic Dockyard Full Navy Ticket.

Take a trip to the Isle of Wight for a wealth of attractions including the famous Carisbrooke Castle and Osborne House, once home to Queen Victoria. There are regular hovercraft, catamaran and car ferry sailings with crossing times from only 10 minutes.

Right on our doorstep is the South Downs National Park, full of fascinating trails to walk or cycle. Visit the Edwardian Stansted House, set in an 1800 acre estate within the national park.

The 140,000 acre New Forest National Park is home to the famous ponies, deer and cattle in their natural habitat. Visit the National Motor Museum, Palace House and Beaulieu Abbey.

The beautiful county of West Sussex is rich in history, from the impressive Arundel Castle, historic houses, racing, and museums to suit all interests, to the city of Chichester including the fascinating Tangmere Aviation Museum.

In Winchester, visit King Arthur's legendary round table and the ancient Winchester Cathedral, the burial place of Jane Austen. Nearby Marwell Zoo is inhabited by more than 250 exotic and endangered species. In the countryside to the north of the city at Laverstoke Mill is the Bombay Sapphire Distillery where visitors can uncover the secrets of this world famous gin.

And don't forget London is just over 90 minutes away by train or coach – it couldn't be easier to take a day trip to the capital.

TAKE FLIGHT BY HOVERCRAFT

SOUTHSEA, PORTSMOUTH TO RYDE, ISLE OF WIGHT



Visit the Isle of Wight for day trips, short breaks, attractions, dining, outstanding scenery and beautiful sandy beaches...

[@hovertraveltd](https://twitter.com/hovertraveltd)
[/hovertraveltd](https://facebook.com/hovertraveltd)
info@hovertravel.com
www.hovertravel.com



Portsmouth Marriott Hotel is a 4-star haven with beautifully appointed rooms and suites, featuring stylish décor, high-speed Wi-Fi, coffee makers and flat-screen TVs. It is the perfect location for business trips and family getaways close to popular landmarks, such as Emirates Spinnaker Tower, Gunwharf Quays, Port Solent and the Historic Dockyard. After a memorable day in the city, relax in our hotel spa or dine on globally inspired cuisine at our Cast Iron Bar & Grill. With elegant event space, a heated indoor pool and well-equipped gym, our hotel is a destination all its own.

MARRIOTT HOTELS | TRAVEL BRILLIANTLY
 023 9238 3151 | www.marriott.com
portsmouth.events@marriotthotels.co.uk



Listings for venues, galleries, accommodation, food and drink

This guide offers just a sample of all the great places to sleep, eat and drink in Portsmouth. The city also boasts a wide selection of cafés, coffee shops, tea rooms and many more hotels, restaurants and pubs. Find out more at www.visitportsmouth.co.uk

Hotels

Holiday Inn Portsmouth	Pembroke Road, PO1 2TA	0871 942 9065
Holiday Inn Express	Gunwharf Quays, PO1 3FD	023 9289 4240
Ibis Portsmouth	Winston Churchill Avenue, PO1 2LX	023 9264 0000
Portsmouth Marriott Hotel	Southampton Road, PO6 4SH	023 9238 3151
Queen's Hotel	Clarence Parade, PO5 3LJ	023 9282 2466
Q8 Boutique Hotel	38 Clarence Parade, PO5 2ET	023 9273 3331
Royal Beach Hotel	St Helen's Parade, PO4 0RN	023 9273 1281
Royal Maritime Club	Queen St, PO1 3HS	023 9282 4231
Village Hotel Portsmouth	Lakeshore Drive, PO6 3FR	023 9200 6245

Guest Accommodation

Esk Vale Guest House	39 Granada Road, PO4 0RD	023 9286 2639
Everley Guest House	33 Festing Road, PO4 0NG	023 9273 1001
Rees Hall	Southsea Terrace, PO5 3AP	023 9284 4884
The Albatross Guest House	51 Waverley Road, PO5 2PJ	023 9282 8325
The Ferryman Guest House	16 Victoria Road South, PO5 2BZ	023 9287 5824
Upper Mount House	The Vale, PO5 2EQ	023 9282 0456

Self-Catering

Home From Home Portsmouth	Various locations	07763 803554
Lakeside Apartments	5 Helena Road, PO4 9RH	023 9282 0690
Starlight Serviced Apartments		kirsty@starlightservicedapartments.co.uk

Venues and Galleries

Art Space – GASP	Brougham Rd, Southsea, PO5 4PA
Aspek – Contemporary Art Gallery	Vulcan Building, Gunwharf Quays, Portsmouth, PO1 3BF
Coastguard Studio	Montague House, Clarendon Rd, Portsmouth, PO4 0SA
Groundlings Theatre	42 Kent St, Portsmouth, PO1 3BS
Hotwalls Studios	Broad Street, Portsmouth, PO1 2JE
Jack House Gallery	121 High St, Old Portsmouth, PO1 2HW
Kings Theatre	Albert Rd, Southsea, PO5 2QJ
National Museum of the Royal Navy	Portsmouth Historic Dockyard, PO1 3LJ
New Theatre Royal	Guildhall Walk, Portsmouth, PO1 2DD
No. 6 Cinema	Portsmouth Historic Dockyard, PO1 3LJ
Portsmouth Cathedral	High St, Old Portsmouth, PO1 2HH
Portsmouth Film Society	Eldon Building, Winston Churchill Ave, Portsmouth, PO1 2DJ
Portsmouth Guildhall	Guildhall Square, Portsmouth, PO1 2AB
Portsmouth Museum	Museum Rd, Portsmouth, PO1 2LJ
Portsmouth Music Experience	Portsmouth Guildhall, as above
Pyramids Centre	Clarence Esplanade, Southsea, PO5 3ST
Wedgewood Rooms	147b Albert Rd, Southsea, PO4 0JW

Restaurants

Grace and Ivy	25 Marmion Road, Southsea, PO5 2AT	023 92820800
60Z Burgers	46 Osborne Road, Southsea, PO5 3LT	023 9307 9957
Abarbistro	58 White Hart Road, Old Portsmouth, PO1 2JA	023 9281 1585
Agora Restaurant	9 Clarendon Road, Southsea, PO5 2ED	023 9282 2617
Akash	99 Albert Road, Southsea, PO5 2SG	023 9229 1813
Algarve's Grill	48 Osborne Road, Southsea, PO5 3LT	023 9307 6062
Aurora	40 Albert Road, Southsea, PO5 2SJ	023 9217 7400
Azzurro	Gunwharf Quays, PO1 3TA	023 9283 2111
Bangkok Cafe	64 – 66 Albert Road, Portsmouth, PO5 2SL	023 9242 9922
Bar 69	69 Palmerston Road, Southsea, PO5 3PP	023 9281 5498
Becketts Restaurant	11 Bellevue Terrace, Southsea, PO5 3AT	023 9286 5000
Bella Italia	Gunwharf Quays, PO1 3TA	023 9286 4444
Belle Isle	39 Osborne Road, Southsea, PO5 3LR	023 9282 0515
Bodrum Restaurant	165 – 167 Albert Road, Southsea, PO4 0JW	023 9282 9707
Bombay Bay	Fort Cumberland Road, Eastney, PO4 9RJ	023 9281 6066
Bombay Express	77 – 79 Albert Road, Southsea, PO5 2SG	023 9282 1661
Brasserie Blanc	Gunwharf Quays, PO1 3FR	023 9289 1320
Brasserie Lou Lou's	37 Marmion Road, Southsea, PO5 2AT	023 9282 5113
Café Rouge	Gunwharf Quays, PO1 3FA	023 9275 4849
Canteen	Point Battery & Barracks, Broad Street, Old Portsmouth, PO1 2FS	
Capers	59 Marmion Road, Southsea, PO5 2AX	023 9281 5511
Carluccio's	Gunwharf Quays, PO1 3TZ	023 9287 6372
Casa Brasil	44/45 The Boardwalk, Port Solent, PO6 4TP	023 9221 4444
Cha Chas	95 Palmerston Road, Southsea, PO5 3PR	023 9229 3806
Cheese and Cheers	56 Osborne Road, Southsea, PO5 3LU	023 9242 1279
Chilli Padi	140 Elm Grove, Southsea, PO5 1LR	023 9273 4008
Chiquito	Gunwharf Quays, PO1 3TU	023 9289 9760
Circolo Pizzeria	78 Osborne Road, Southsea, PO5 3LU	023 9234 9079
Coast to Coast	Gunwharf Quays, PO1 3TZ	023 9282 4865
Coriander	54 Albert Road, Portsmouth, PO5 2SJ	023 9282 6343
Courtyard	Southsea Castle, Clarence Esplanade, PO5 3PA	023 9281 7454
Deep Blue	South Parade Pier, Southsea, PO4 0SW	023 9421 0888
Don Claudio	15 Jubilee Terrace, Portsmouth, PO5 3AS	023 9282 2200
Dubai	134 Albert Road, Southsea, PO4 0JS	023 9275 2255
Farm Kitchen	67 Palmerston Road, Southsea, PO5 3PP	023 9286 2666
Fisherman's Kitchen	4 Clarendon Road, Southsea, Hampshire, PO5 2EE	023 9275 6556
Five Guys	Gunwharf Quays, PO1 3TU	023 9283 6700
Fortune House	175 Albert Road, Portsmouth, PO4 0JW	023 9275 0584
Frankie and Benny's	Gunwharf Quays, PO1 3TZ	023 9273 2151
Friendly Phils Diner	30 – 31 The Boardwalk, Port Solent, PO6 4TP	023 9238 1765

Restaurants

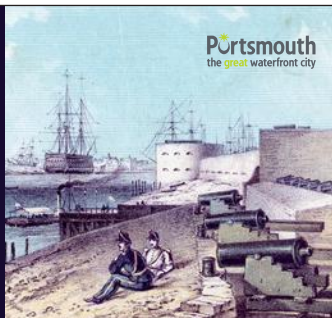
Galbi Korean Table BBQ	8 Albert Road, Southsea, PO5 2SH	023 9242 7734
Garage Lounge	1 Albert Road, Southsea, PO5 2SP	023 9234 3630
Gin and Olive	17 Albert Road, Southsea, PO5 2SE	023 9282 7007
Giraffe	Gunwharf Quays, PO1 3TR	023 9283 3787
Gisors Restaurant	106 Marmion Road, Southsea, PO5 2BB	023 9217 8727
Good Fortune	21 High Street, Portsmouth, PO1 2LP	023 9286 3293
Haldi	93 Albert Road, Southsea, PO5 2SG	023 9282 0116
Harvester	Eastern Road, Portsmouth, PO3 6QB	023 9265 1051
Harvester	The Boardwalk, Port Solent, PO6 4TP	023 9220 1012
Hot Rock	40 The Boardwalk, Port Solent, PO4 6TP	023 9237 2540
Huis	62 Elm Grove, Southsea, PO5 1JG	023 9217 6465
India Quay	12 – 14 The Boardwalk, Port Solent, PO6 4TP	023 9238 7559
Indian Cottage	257 Albert Road, Southsea, PO4 0JR	023 9282 6010
Istanbul Restaurant	40 Osborne Road, Southsea, PO5 3LT	023 9275 3490
Italian Bar and Grill	30 Great Southsea Street, Southsea, PO5 3BY	023 9275 3058
Jags @ 119	119 Elm Grove, Southsea, PO5 1LH	023 9287 6088
Kadir's Indian Street Kitchen	217 Albert Road, Southsea, PO4 0JP	023 9273 0300
Kashmir	91 Palmerston Road, Southsea, PO5 3PR	023 9282 2013
Kassia	82 Osborne Road, Southsea, PO5 3LU	023 9281 1114
Kingfisher	10 Albert Road, Southsea, PO5 2SH	023 9281 4330
Koh Thai Tapas	8 Kings Road, Southsea, PO5 3AH	023 9282 4825
Las Iguanas	Gunwharf Quays, PO1 3SY	023 9229 3797
Lin's Thai Cafe	78 Elm Grove, Southsea, PO5 1LN	023 9229 1115
Loch Fyne	Gunwharf Quays, PO1 3BF	023 9277 8060
Meat and Barrel	112 – 114 Palmerston Road, Southsea, PO5 3PT	023 9217 6291
Montparnasse	103 Palmerston Road, Southsea, PO5 3PS	023 9217 6256
Monty's	69 Castle Road, Southsea, PO5 3AY	023 9281 6825
Mozzarella Joes	Clarence Esplanade, PO5 3AE	023 9229 5004
My Bar & Eatery	61 Albert Road, Southsea, PO5 2SF	023 9217 9448
Nando's	Gunwharf Quays, PO1 3TR	023 9275 3360
Nara Sushi Bistro	178 – 180 Albert Road, Southsea, PO4 0JT	023 9283 7315
Nemrut	94 Albert Road, Southsea, PO5 2SN	023 9275 6777
Nicholsons	245 Albert Road, Southsea, PO4 0JR	023 9281 5222
Noble House	43 Osborne Road, Southsea, PO5 3LS	023 9282 6880
O Sole Mio	19 The Boardwalk, Port Solent, PO6 4TP	023 9238 8697
Old Customs House	Gunwharf Quays, PO1 3TY	023 9283 2333
Parade Tearooms	7 – 8 Western Parade, Southsea, PO5 3JF	023 9242 1265
Pie & Vinyl	61 Castle Road, Southsea, PO5 3AY	023 9275 3914
Pizza Express	Gunwharf Quays, PO1 3TA	023 9283 2939
Pizza Express	20 – 21 The Boardwalk, Port Solent, PO6 4TP	023 9232 5925
Prezzo	43 The Boardwalk, Port Solent, PO6 4TP	023 9238 7951
Purple Mango	27 Albert Road, Southsea, PO5 2SE	023 9286 2518
Rancho Steak House	61 Osborne Road, Southsea, PO5 3LS	023 9273 7235
Real China	7 Albert Road, Southsea, PO5 2SE	023 9217 6766
Relentless HQ	12 The Boardwalk, Port Solent, PO6 4TP	023 9232 4812
Restaurant 27	27A South Parade, Southsea, PO5 2JF	023 9287 6272
Rosie's Vineyard	87 Elm Grove, Southsea, PO5 1JF	023 9275 5944
Sakura	7 Albert Road, Southsea, PO5 2SZ	023 9275 6277
Samphire Brasserie	1 Kent Road, Southsea, PO5 3EG	023 9282 6879
Sant Yago	12 Clarendon Road, Southsea, PO5 2EE	023 9217 9636
Sants	67 Castle Road, Southsea, PO5 3AY	023 9273 3700
Sealevel Restaurant	Portsmouth Marriott Hotel, Southampton Road, PO6 4SH	023 9238 3151
Shorties	8 – 9 Bellevue Terrace, Southsea, PO5 3AT	023 9283 1941
Slug and Lettuce	Gunwharf Quays, PO1 3TR	023 9200 7602
Slug and Lettuce	80 – 82 Palmerston Road, Southsea, PO5 3PT	023 9286 3981
Soprano's	108 Palmerston Road, Southsea, PO5 3PT	023 9281 1139
Southsea Beach Cafe	Eastney Esplanade, Southsea, PO4 0SP	023 9283 2854

Restaurants

Spice Island	1 Bath Square, Old Portsmouth, PO1 2JL	023 9287 0543
Spice Merchants	44 Osborne Road, Southsea, PO5 3LT	023 9282 8900
Spice Route	101 Palmerston Road, Southsea, PO5 3PS	023 9282 2567
Steki	58 Osborne Road, Portsmouth, PO5 3LU	023 9275 0200
Strada	Gunwharf Quays, PO1 3TW	023 9281 7278
T & J Mahal	39 Elm Grove, Southsea, PO5 1JF	023 9281 5824
Teatray	31 Osborne Road, Southsea, PO5 3LR	023 9273 1903
Thailand Cafe and Takeaway	186 Albert Road, Portsmouth, PO4 0JT	023 9242 1242
The Briny	Clarence Esplanade, PO5 3PG	023 9282 6676
The Chambers	27 Landport Terrace, Southsea, PO1 2RG	023 9281 8270
The Liquorist	Gunwharf Quays, PO1 3TD	023 9285 1070
Three	106 Palmerston Road, Southsea, PO5 3PT	07557 982440
Tiger Tiger	Gunwharf Quays, PO1 3TP	023 9288 2244
Traders Restaurant	Holiday Inn, Pembroke Road, Southsea, PO1 2TA	0871 942 9065
Twins Chinese Hot Pot	255 Albert Road, Southsea, PO4 0JR	023 9273 9688
Two Doors Down	42 Osborne Road, Southsea, PO5 3LT	023 9243 0813
Umami	167 Elm Grove, Southsea, PO5 1LU	023 9273 0033
Viet Quan Cafe	1 Landport Terrace, Portsmouth, PO1 2RG	023 9217 6108
Wagamama	Gunwharf Quays, PO1 3TR	023 9286 1128
Waterfront Café	Gunwharf Quays, PO1 3TR	023 9285 7520
Watermark	36–38 The Boardwalk, Port Solent, PO6 4TP	023 9237 7422
Wellington	62 High Street, Old Portsmouth, PO1 2LY	023 9281 8965
Wildwood	36 The Boardwalk, Port Solent, PO6 4TP	023 9387 1800
Zizi	33 The Boardwalk, Port Solent, PO6 4TP	023 8178 0702
Zizzi	Gunwharf Quays, PO1 3TA	023 9217 5111

Find out more about Portsmouth's incredible history by joining one of the city's regular **guided walks**

Full listing available on www.visitportsmouth.co.uk



Portsmouth's Visitor Information team offer

A Great Waterfront Welcome

- information on accommodation, attractions and events
- tickets for Portsmouth attractions – with up to 10% discount
- theatre, ferry and coach trip tickets
- Waterfront Gifts Shop

Based at the Hard transport hub, 023 9282 6722, vis@portsmouthcc.gov.uk, www.visitportsmouth.co.uk

Important note: Whilst every effort has been made to ensure that this information is correct, Portsmouth City Council cannot guarantee complete accuracy of the information and all liability for loss, disappointment, negligence or other damages caused by this publication, is hereby excluded. As changes often occur after press date, it is advisable to confirm the information given with the relevant organisation. All information is for guidance only, and was current as of December 2018.

You could see your photographs of Portsmouth featured in our publications, publicity material or online channels. Just upload them to our Flickr group: **Views of Portsmouth: submitted pictures**

YOUR LINK TO

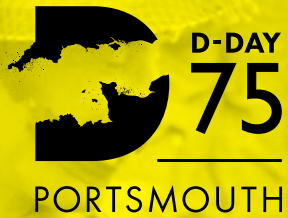
getting away from it all

Our FastCat passenger service connects Portsmouth with Ryde on the Isle of Wight in just 22 minutes – the perfect place to start your Island adventure on foot, by bike or by train.

Book your trip now at wightlink.co.uk

WIGHTLINK
ISLE OF WIGHT FERRIES

YOUR LINK TO THE ISLAND



**We shared
everything
we had.**

**Cocoa.
Laughter.
Heartbreak.**

Visit The D-Day Story, open daily, all year.
Join us in Portsmouth for the national events
to commemorate D-Day75, 5 – 9 June 2019.

Full programme available at
www.visitportsmouth.co.uk